

Mechanical lines for solid forming

Ideal for cold, warm and hot precision forging



Mechanical line for solid forming

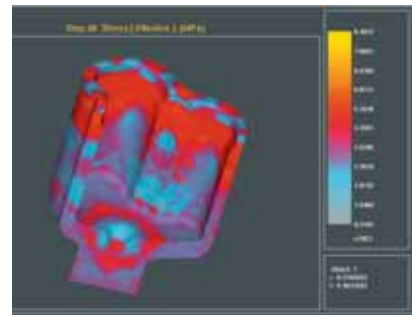
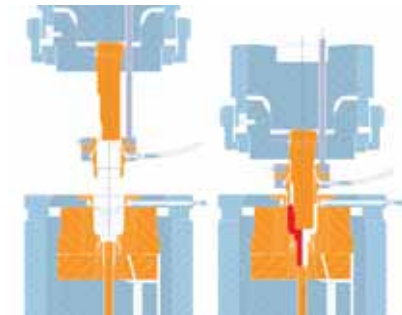
Schuler lines for solid forming are designed for the cost-effective manufacture of large and difficult part geometries that can be achieved by the number of available forming stations, the available work energy and the long nominal force travels. The systems solutions designed and built by Schuler range from fully automated press lines to automated cold extrusion presses and to forging lines.

ADVANTAGES AT A GLANCE

- Significant material and energy savings as compared to other manufacturing methods
- Manufacturing to near final contour in near-net-shape quality
- Reliable part handling by means of bed ejector systems and slide ejectors
- Optimal part quality with long tool service life
- Tool cooling and lubrication systems for extended tool service life
- User-friendly control concept
- Highest possible component quality in the areas of cold, warm and hot precision forging
- Eccentric drive and link drive presses



The demand for near-net-shape quality components also requires a mastery of process technology. Schuler offers comprehensive know-how for all facets of process development and tool technology.



Accessories designed to suit your specific needs: part transfer by 2- or 3-axis transfer system and robots: tool changing systems for quick changeovers of compound tool stations, single tools or entire tool sets: tool cooling/lubrication systems for extended tool service life.

From the idea to volume production: process development at Schuler.

Mechanical lines for solid forming			
Capacity [kN]	Slide stroke [mm]	Stroking rate [spm]	Bed dimensions [mm x mm]
3.150	250	30 – 60	1.000 x 600
	500	22 – 45	
4.000	250	30 – 60	1.000 x 600
	500	22 – 45	
6.300	315	25 – 50	1.250 x 710 (1.250 x 710)
	420	25 – 50	
8.000	315	25 – 55	1.250 x 700
	500	22 – 45	
10.000	400	25 – 50	1.500 x 1.000 (1.500 x 850)
	630	18 – 38	
12.000	400	25 – 50	1.500 x 1.000 (1.500 x 850)
	630	18 – 38	
16.000	630	18 – 40	2.000 x 1.000 (2.000 x 1.000)
	800	16 – 38	
20.000	630	18 – 40	2.000 x 1.000 (2.000 x 1.000)
	800	16 – 38	
25.000	630	18 – 36	2.200 x 1.000 (2.200 x 1.000)
	800	16 – 32	
31.500	630	18 – 36	2.200 x 1.000 (2.200 x 1.000)
	800	16 – 32	
40.000	630	16 – 32	3.000 x 1.500 (3.000 x 1.500)
	1.000	15 – 25	

Number of stations can be selected dependent on bed dimensions

SCHULER PRESSEN GMBH & CO. KG

Bahnhofstraße 41 | D-73033 Göppingen | Telefon +49 (71 61) 66-0 | Fax +49 (71 61) 66-233
 info@schulergroup.com | www.schulergroup.com